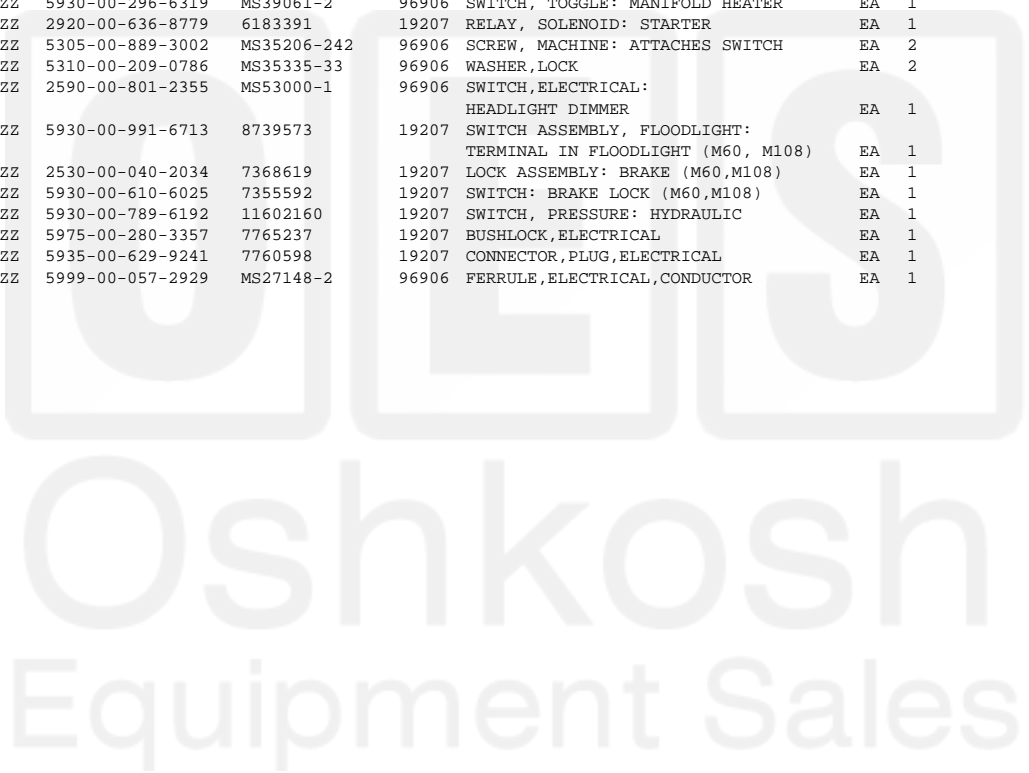
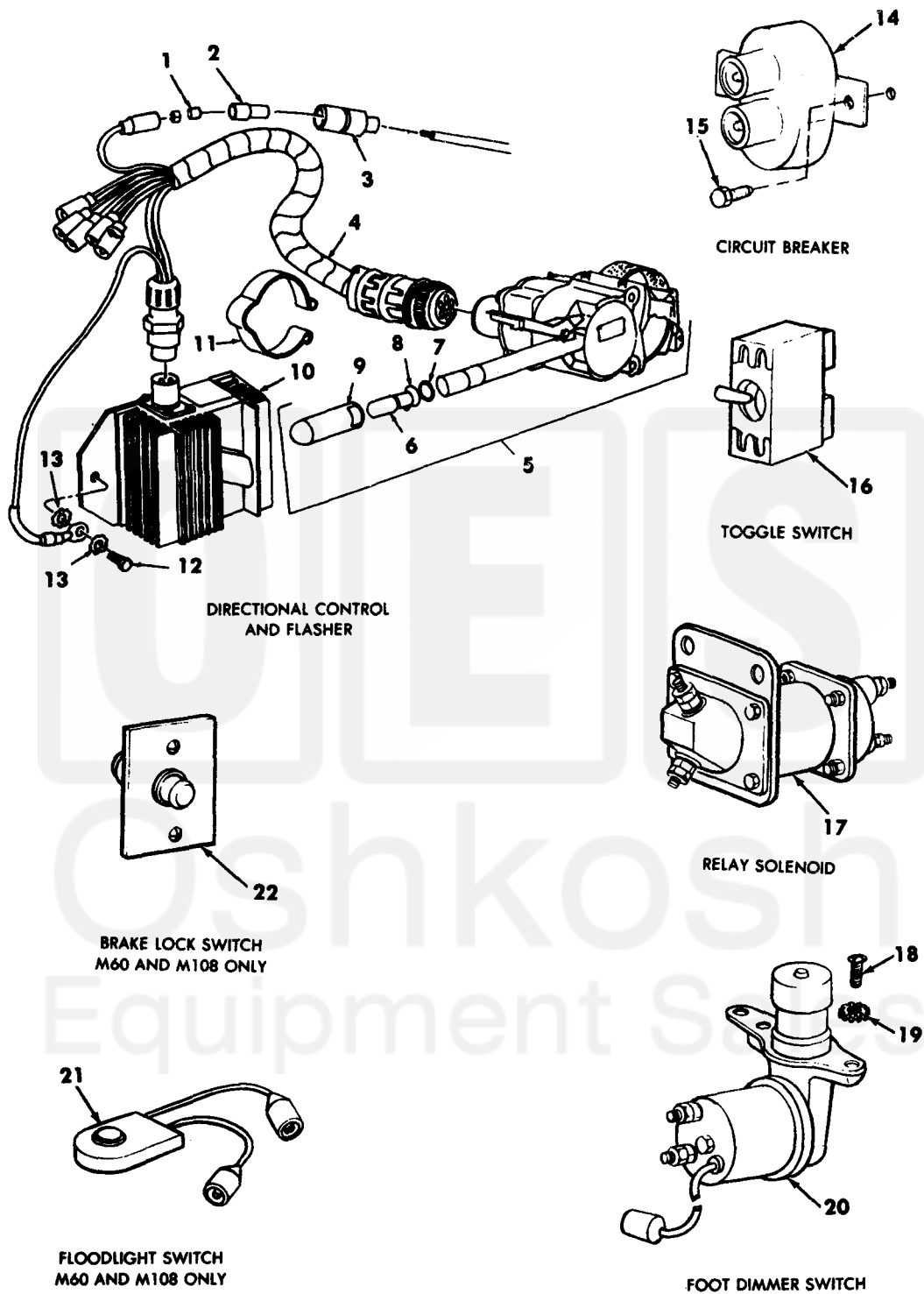


Current part is item (20) on diagram. Available at [www.oshkoshequipment.com](http://www.oshkoshequipment.com)

(1) (a) FIG. NO.	(2) (b) ITEM NO.	(3) SMR CODE	(4) NATIONAL STOCK NUMBER	(5) PART NUMBER	(6) FSCM DESCRIPTION USABLE ON CODE	(7) U/M	(8) INC IN UNIT
0608-MISCELLANEOUS ITEMS							
64	1		5940-00-399-6676	8338564	19207 TERMINAL A	EA	6
64	2		5970-00-833-8562	8338562	19207 SLEEVE A	EA	6
64	3		5935-00-833-8561	8338561	19207 SHELL A	EA	6
64	4		2590-00-308-2781	11630528	19207 CABLE ASSEMBLY A		
64	5		6220-00-808-6072	11613632-1	19207 CONTROL ASSEMBLY: DIRECTIONAL SIGNAL (WITH HAZARD WARNING)	EA	1
64	6		6240-00-419-3185	MS25231-1873	96906 LAMP, INCANDESCENT: DIRECTIONAL CONTROL HANDLE	EA	1
64	7			11662946	19207 PACKING, PREFORMED	EA	1
64	8			11662919	19207 WASHER	EA	1
64	9			11662918	19207 CAP	EA	1
64	10		5945-00-789-3706	11613631	19207 FLASHER, SOLID STATE: DIRECTIONAL CONTROL SIGNAL	EA	1
64	11		5340-00-168-7179	10882088	19207 CLIP: TURN SIGNAL CABLE RETAINING, (2) FOR M151, M151A1, M151A1C AND M718; (1) FOR M151A2, M718A1 AND M825	EA	3
64	12		5305-00-225-3838	MS90725-4	96906 SCREW, CAP, HEXAGON HEAD B	EA	2
64	13		5310-00-209-0786	MS35335-33	96906 WASHER, LOCK B	EA	3
64	14	PAOZZ	5925-00-026-4767	MS39062-1	96906 CIRCUIT BREAKER	EA	1
64	15	PAOZZ	5305-00-855-0965	MS24629-38	96906 SCREW, TAPPING, THREAD	EA	2
64	16	PAOZZ	5930-00-296-6319	MS39061-2	96906 SWITCH, TOGGLE: MANIFOLD HEATER	EA	1
64	17	PAOZZ	2920-00-636-8779	6183391	19207 RELAY, SOLENOID: STARTER	EA	1
64	18	PAOZZ	5305-00-889-3002	MS35206-242	96906 SCREW, MACHINE: ATTACHES SWITCH	EA	2
64	19	PAOZZ	5310-00-209-0786	MS35335-33	96906 WASHER, LOCK	EA	2
64	20	PAOZZ	2590-00-801-2355	MS53000-1	96906 SWITCH, ELECTRICAL: HEADLIGHT DIMMER	EA	1
64	21	PAOZZ	5930-00-991-6713	8739573	19207 SWITCH ASSEMBLY, FLOODLIGHT: TERMINAL IN FLOODLIGHT (M60, M108)	EA	1
64	22	PAOZZ	2530-00-040-2034	7368619	19207 LOCK ASSEMBLY: BRAKE (M60, M108)	EA	1
64	NI	PAOZZ	5930-00-610-6025	7355592	19207 SWITCH: BRAKE LOCK (M60, M108)	EA	1
65	1	PAOZZ	5930-00-789-6192	11602160	19207 SWITCH, PRESSURE: HYDRAULIC	EA	1
65	2	PAFZZ	5975-00-280-3357	7765237	19207 BUSHLOCK, ELECTRICAL	EA	1
65	3	PAFZZ	5935-00-629-9241	7760598	19207 CONNECTOR, PLUG, ELECTRICAL	EA	1
65	4	PAFZZ	5999-00-057-2929	MS27148-2	96906 FERRULE, ELECTRICAL, CONDUCTOR	EA	1



Current part is item (20) on diagram. Available at [www.oshkoshequipment.com](http://www.oshkoshequipment.com)



TA 096371

Figure 64. Miscellaneous switches, relays, current breakers, terminal and junction boxes.